

# Transportecnic



## Packing and assembly benches

*Transportecnic* **Spaceguard Ltd:** Bergen Way, Sutton Fields, Hull, HU7 0YQ

**Tel: 01482 838605 Fax: 01482 838705**

email: [sales@transportecnic.co.uk](mailto:sales@transportecnic.co.uk) website: [www.packingtables.co.uk](http://www.packingtables.co.uk)

# Economy Packing table



**Budget Packing tables** manufactured by Transportecnic are manufactured from welded mild steel section, topped with a 18mm chipboard top, are supplied flat pack for customer assembly (which takes approximately 5 minutes) This sturdy table is manufactured with welded box section steel legs, with simple bolt in cross ties. This is an ideal packing, light assembly or workbench for any environment. With options such as under bench roll holders, bubble wrap cutters and CPU mounting.

**This bench is available on a quick despatch 1-2 days** from our UK manufacturing base.

## Specifications

Frame detail: Welded mild steel  
Frame finish: RAL 5010 (Blue) (others available)  
Table top material: 18mm thick Chip board  
Assembly detail: Easy assembled flat pack

Table lengths: 800, 1200, 1500 & 1800mm  
Table widths: 600, 750 & 900mm  
Table height: 850 mm

Support detail: Welded 'H' section (+/- 50mm)

## Optional Components

- Lower roll holder
- Bubble wrap / paper cutter
- PC (CPU) Holder
- Lower shelf
- Antistatic PVC Topped table top

## Why buy benches from Transportecnic

- Quick deliveries
- Great pricing
- Quality equipment
- Proven reliable products
- Excellent service
- UK manufacturer

# Packing table / bench



\* Bench show has accessories fitted

**Packing tables** manufactured by Transportecnic are manufactured from welded mild steel section topped with a 18mm MDF top. They are supplied fully assembled. This sturdy table is manufactured with welded box section steel legs, with bolt in cross ties. This is an ideal packing, medium duty assembly or workbench for any environment. With options such as under bench roll holders, bubble wrap cutters and CPU mounting.

**This bench is available on a quick despatch 4-5 days** from our UK manufacturing base.

## Specifications

Frame detail: Welded mild steel  
Frame finish: RAL 5010 (Blue) (others available)  
Table top material: 18mm thick MDF  
Assembly detail: Fully Assembled

Table lengths: To suit requirements  
Table widths: To suit requirements  
Table height: To suit requirements

Support detail: Welded 'H' section (+/- 50mm)

## Why buy benches from Transportecnic

- Quick deliveries
- Great pricing
- Quality equipment
- Proven reliable products
- Excellent service
- UK manufacturer

## Optional Components

### Table Accessories

- 300mm upper shelf
- Lower MDF Shelf
- Corner units
- Anti static PVC Topped

### Packing accessories

- Upper roll holder
- Lower roll holder
- Bubble wrap / paper cutter

### Electrical

- Upper light fitting
- 6 Gang socket extension
- Twin socket island
- CAT5 Cabling
- Bench top trunking

### Storage

- Louver panel 450 x 450
- Single drawer
- Single cupboard
- CPU (PC) Holder

### Other

- Pneumatic piped
- Steel topped

# Assembly bench

# Transportecnic



\* Bench show has accessories fitted

**Assembly benches** manufactured by Transportecnic are manufactured from welded mild steel section, topped with a 18mm MDF top. They are supplied fully assembled. This sturdy bench is manufactured with welded box section steel legs, with bolt in cross ties. This is an ideal part assembly or electrical repair, medium duty assembly workbench for any environment. With options such as anti static topped, upper light fitting and CPU mounting.

**This bench is available on a quick despatch 4-5 days** from our UK manufacturing base.

## Specifications

Frame detail: Welded mild steel  
Frame finish: RAL 5010 (Blue) (others available)  
Table top material: 18mm thick MDF  
Assembly detail: Fully Assembled

Table lengths: To suit requirements  
Table widths: To suit requirements  
Table height: To suit requirements

Support detail: Welded 'H' section (+/- 50mm)

## Why buy benches from Transportecnic

- Quick deliveries
- Great pricing
- Quality equipment
- Proven reliable products
- Excellent service
- UK manufacturer

## Optional Components

### Table Accessories

- 300mm upper shelf
- Lower MDF Shelf
- Corner units
- Anti static PVC Topped

### Packing accessories

- Upper roll holder
- Lower roll holder
- Bubble wrap / paper cutter

### Electrical

- Upper light fitting
- 6 Gang socket extension
- Twin socket island
- CAT5 Cabling
- Bench top trunking

### Storage

- Louver panel 450 x 450
- Single drawer
- Single cupboard
- CPU (PC) Holder

### Other

- Pneumatic piped

# Stainless steel table



\* Bench show has accessories fitted

**Stainless steel tables** manufactured by Transportecnic are manufactured from welded stainless steel section, topped with a removable stainless steel top. We offer two stainless steel table products. The first is a budget version, which comes easy assembled flat packed for customer assembly (which takes approximately 5 minutes) or our fully welded version.

**This bench is available on a quick despatch 5 days** from our UK manufacturing base.

## Specifications

Frame detail: Stainless steel (grade 304)  
Frame finish: 2b  
Table top material: Stainless steel grade 304  
Assembly detail: Easy assembled flat pack or Fully welded and assembled  
Table lengths: To suit requirements  
Table widths: To suit requirements  
Table height: To suit requirements  
Support detail: Welded 'H' section (+/- 50mm)

## Optional Components

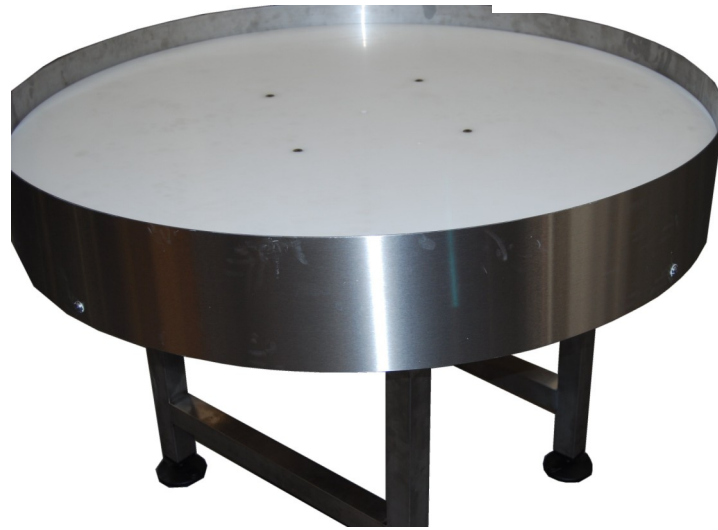
- Lower shelf
- Food grade nylon top

## Why buy benches from Transportecnic

- Quick deliveries
- Great pricing
- Quality equipment
- Proven reliable products
- Excellent service
- UK manufacturer

Phone: 01482 833557 Fax: 01482 838705 Email: [sales@transportecnic.co.uk](mailto:sales@transportecnic.co.uk)

# Rotary Packing Tables



Rotary packing tables (Lazy Suzy) are used to increase accumulation capacity at the end of process lines, packing lines and conveyors.

Please phone our sales office with your requirements on **01482 838605**

## Specifications

Table diameters: 800, 1000, 1200 & 1500mm  
Top material: Food grade nylon

Frame material: Stainless steel  
Guide material: Stainless steel  
Leg material: Stainless steel  
Table finish: 2b or dp1

Table Height: To suit application  
Conveyor loading: 100 kg

Support detail: Welded 'H' section (+/- 50mm)

Drive detail; Geared motor  
Input voltages: 1ph 240V, 3ph 240V or 3ph 400V

Why buy gravity conveyors from Transportecnic

- Quick deliveries
- Great pricing
- Quality equipment
- Proven reliable products
- Excellent service
- UK manufacturer

## Table options

- Product diverter
- Start / Stop Button
- Variable speed control
- Emergency stop

**This product is manufactured with stainless steel frames and support stands for food applications**

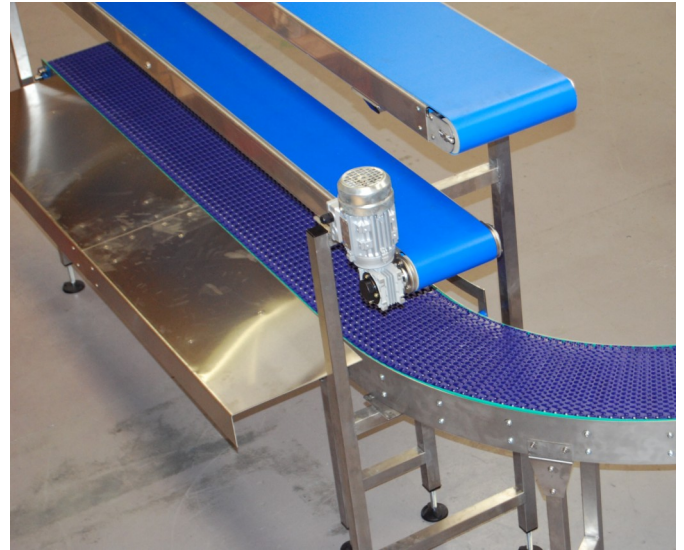
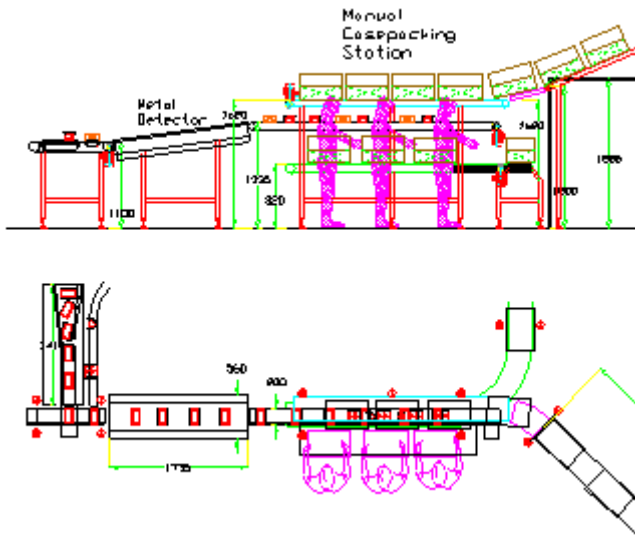
Phone: 01482 833557 Fax: 01482 838705 Email: [sales@transportecnic.co.uk](mailto:sales@transportecnic.co.uk)



Gravity Conveyors  
Driven Roller  
Conveyors  
Packing Tables  
Belt Conveyors  
Pallet Conveyors

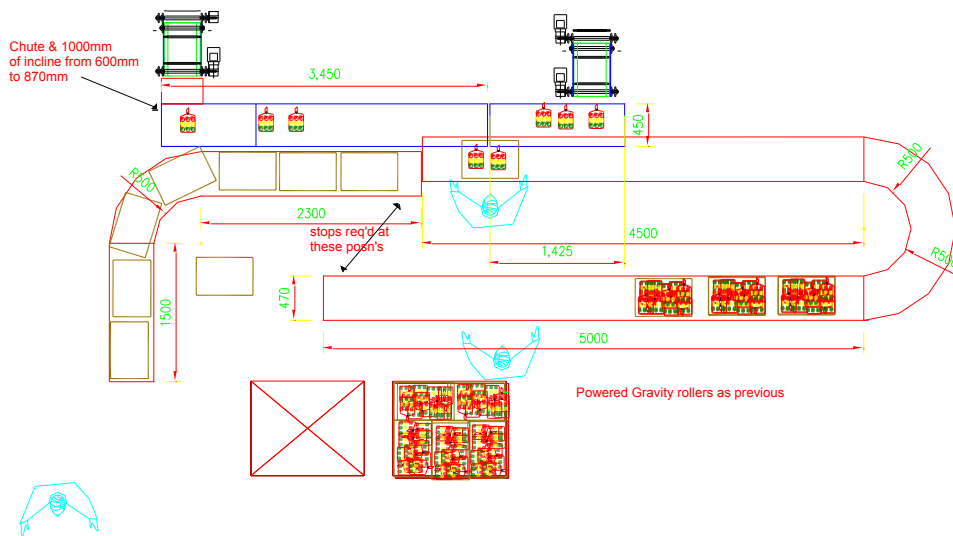
[www.transportecnic.co.uk](http://www.transportecnic.co.uk)

# Bespoke Packing Stations



Working with our customers Transportecnic is able to design and build, full bespoke packing stations to suit your process requirements. From concept to completion Amek is the ideal partner to design and develop your process with you.

For more information or to discuss your requirement, please contact our sales team.



## Why buy benches from Transportecnic

- Quick deliveries
- Great pricing
- Quality equipment
- Proven reliable products
- Excellent service
- UK manufacturer